



Brixton Road, Brixton, SW9

2 bedroom flat - purpose built for sale

£550,000

Leasehold

Property Details

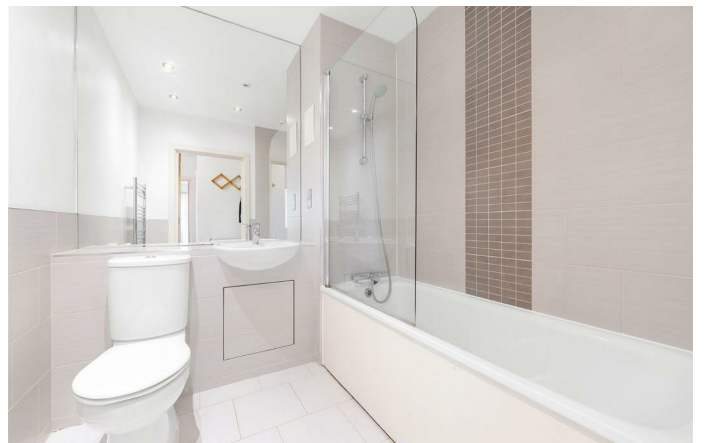
This spectacular two double bedroom apartment with a private terrace offering striking city views is set on the top floor of a secure modern building on Brixton Road. The bright and peaceful open-plan reception room forms the heart of the home, bathed in natural light from large-pane doors and windows, with ample space to lounge, dine and cook in comfort. The contemporary kitchen features cream cabinetry, sleek grey worktops, cream subway tiles and integrated appliances. Double-aspect windows and two sets of doors open onto the impressive wrap-around terrace, providing a substantial outdoor space with panoramic skyline views and a seamless indoor-outdoor flow. The principal bedroom is a calming retreat with floor-to-ceiling windows, soft carpeting and built-in wardrobes, while the second bedroom is a generous double ideal for guests or a home office. The modern bathroom completes this stylish home, fitted with a white suite, shower over bath and elegant cream tiling.

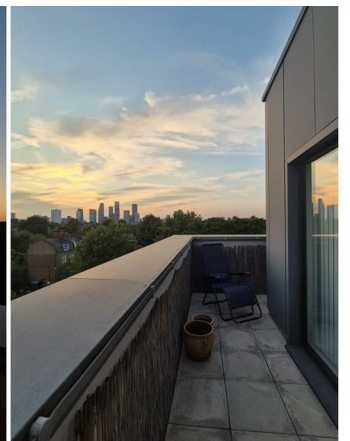
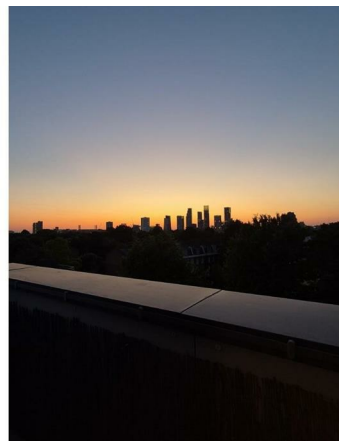
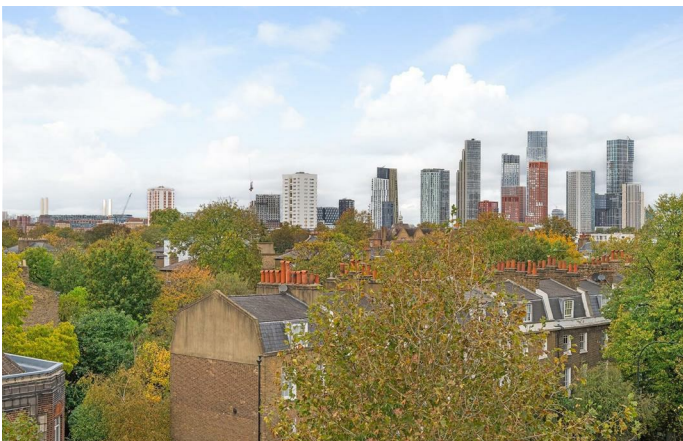
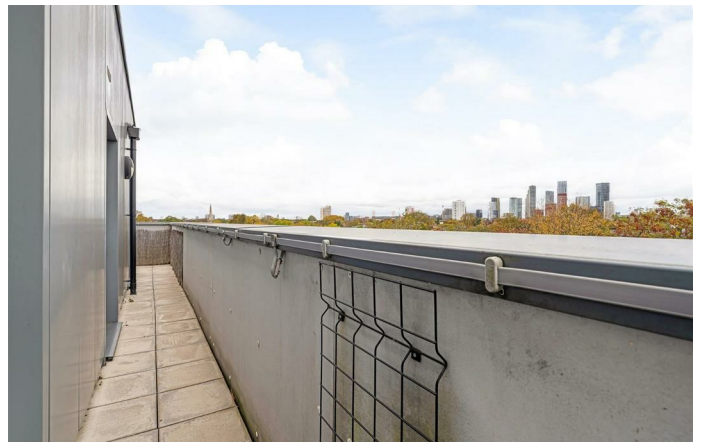
Features

- Two double bedrooms
- Secure modern development
- Top floor apartment
- Private wraparound terrace with striking city views
- Bright and private position
- Residents garden and bike storage
- Lift access
- Central Brixton location
- Minutes from the Victoria line
- Walking distance to Northern line & Clapham High Street

Council tax band D

EPC rating B (82)

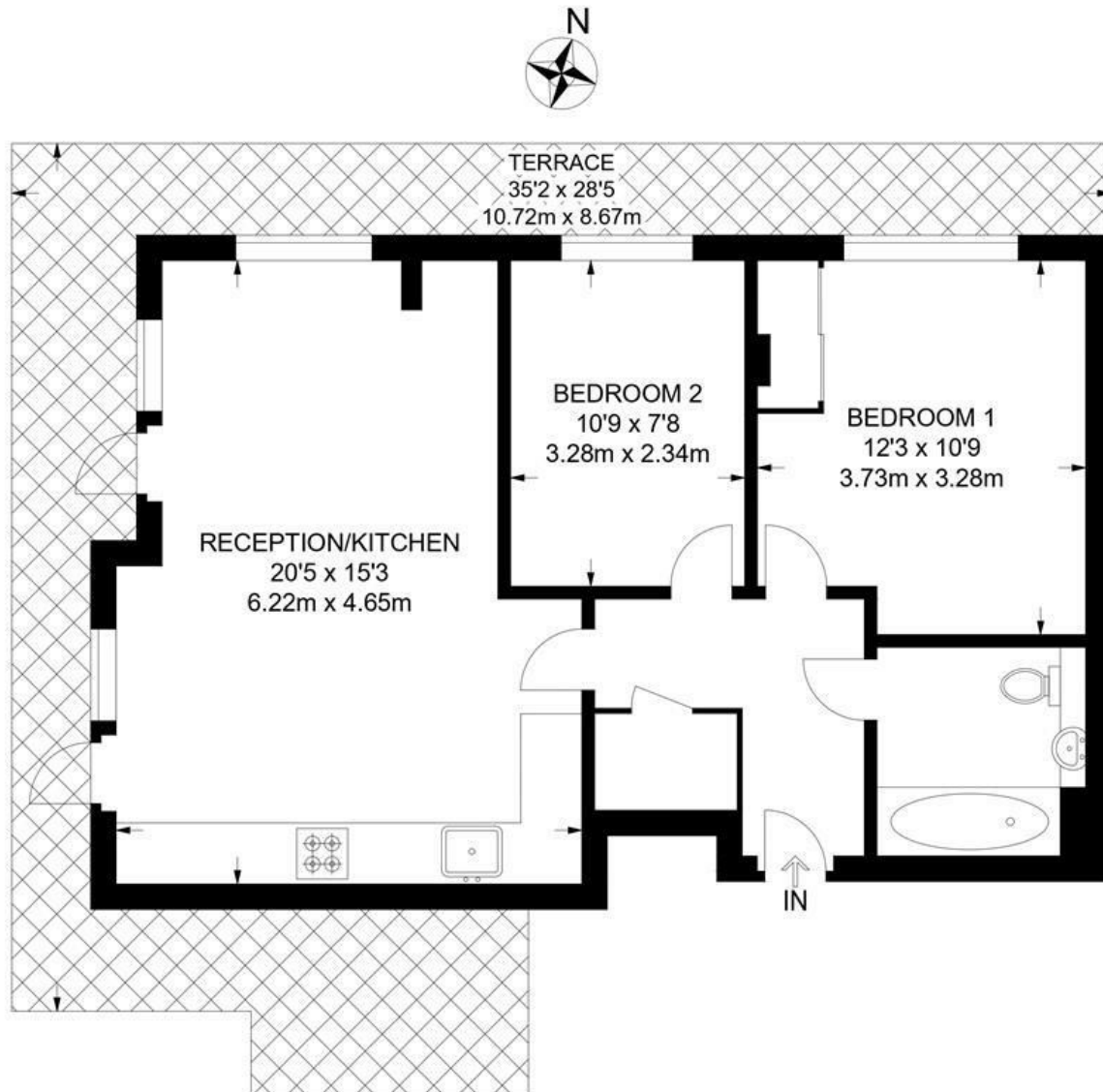




Brixton Road, Brixton, SW9

Brixton Road, SW9
2 Bedroom Flat

APPROXIMATE GROSS INTERNAL AREA: **610 SQ FT / 56.7 SQ M**



FIFTH FLOOR



While we try our very best, floor plans are produced as a guide only and we take no responsibility for the precise accuracy with which any property is represented.

Brixton Road, Brixton, SW9

